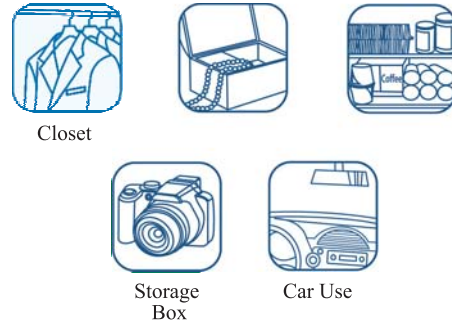


## Product Features

- Traps moisture to protect valuables
- Helps prevent mold and mildew
- Detachable, portable design
- Quick dry regeneration
- No messy refills, nothing to throw away
- Smart color changing indicator crystals
- House, child, and pet safe NON TOXIC

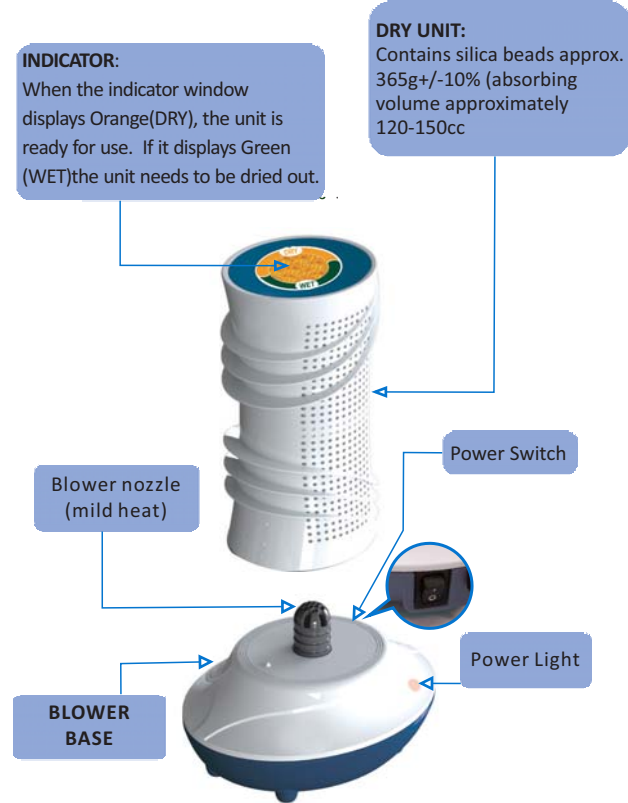
## Product Applications

This product is designed for use in small and enclosed spaces like: Shoe rack, closets, book shelf, cabinets, camera box, storage boxes, inside of piano, kitchen cabinets, safes, and other enclosed storage areas; it's not suitable for usage in large open space locations.



1

## Product Compositions



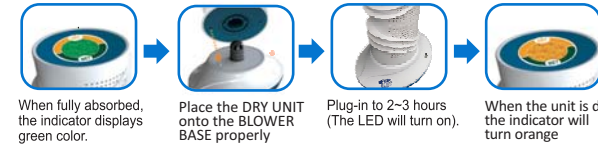
2

## Specifications

Body material: LPP  
Net Weight: 365g+/-10% (absorbing volume approximately 150cc)  
Power: AC 100V/AC 230V.50'60Hz.75W - Fuse: 3A  
Regeneration time: 2-3 hours

## Regeneration Method

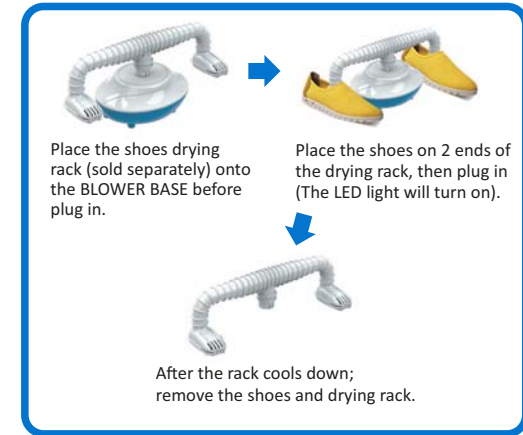
1. Before first time use, **IF** the indicator window of the DRY UNIT displays 'Green (WET)' crystals place the DRY UNIT on the BLOWER BASE and plug-in the BLOWER BASE into an outlet located in a well ventilated area. Turn BLOWER UNIT on and let it run for approx. 2 hours to dry the DRY UNIT out.
2. When the DRY UNIT is dry and ready for use it will display 'Orange (DRY)' crystals. When indicator shows "Orange(Dry)" crystals the DRY UNIT can be placed where needed to absorb moisture
3. Check the indicator window on the DRY UNIT every 2 – 3 weeks or when needed. When the DRY UNIT is displaying 'Green (WET)' crystals simply place the DRY UNIT properly onto the BLOWER BASE and plug-in the BLOWER BASE into an outlet located in a well ventilated area. Turn BLOWER UNIT on and let it run for approx. 2 hours to dry the DRY UNIT out.
4. When the indicator window displays "Orange(DRY)" crystals, then the drying procedure is complete and the DRY UNIT is ready for use again.



3

## Instructions of shoes dryer

Place the shoes drying rack (sold separately) on the BLOWER BASE properly. Then place the shoes on the 2 ends of the drying rack and plug in. After the shoes are dried, remove the shoes from the drying rack.



### Attention:

1. Align ventilating point of the drying rack in the center of the shoes to have better ventilation when drying.
2. Check the shoes drying status every thirty (30) minutes. DO NOT dry for more than two (2) hours
3. Use of the shoe drying function for longer than required may cause damage to the shoes.

4

## Attention

1. Before first time use, **IF** the indicator window of the DRY UNIT displays Green (WET) place the DRY UNIT on the regeneration BLOWER BASE and plug-in the BLOWER BASE into an outlet located in a well ventilated area. Turn BLOWER UNIT on and let it run for approx. two (2) hours to dry the DRY UNIT out.
2. Absorbing rate of DRY UNIT varies according to environmental humidity levels and conditions.
3. Keep ALL objects at a distance of 6 inches as the body of the DRY UNIT generates heat during drying out procedure. DO NOT COVER the DRY UNIT or the BLOWER BASE during regeneration (drying procedure) to prevent damage to the devices.
4. DO NOT allow the DRY UNIT or the BLOWER BASE direct contact with other objects during regeneration (drying procedure) to prevent damage to the devices. Avoid regenerating the unit in high temperature environment (90°F or higher)
5. Keep out of reach of small children during regeneration (drying procedure).
6. Do not place the DRY UNIT or the BLOWER BASE directly in water to prevent damaging the devices.
7. Please wipe clean the devices with cloth, do not use water to wash product. Clean vents at the bottom of the BLOWER BASE with provided brush as needed.
8. Avoid dropping the product to prevent damage.
9. Plug-in BLOWER BASE after the DRY UNIT is properly placed and secured on the base. DO NOT TOUCH the ventilation point of the BLOWER BASE as it may be hot.
10. Unplug the BLOWER BASE when not in use.



5

## Q&A

### Q. Where to use the AIR DRY SYSTEM?

A. The AIR DRY SYSTEM dehumidifier is designed to absorb excess moisture and to keep the humidity levels low (to prevent the growth of mold) in small, enclosed spaces.

### Q. What is the difference between AIR DRY SYSTEM and conventional dehumidifiers?

A. The difference is the AIR DRY SYSTEM does not require power, batteries or cords to absorb moisture. Also there is no noise while using and no leaking, plus it could be placed in any direction. So it is good to use in confined spaces such as closet without electric outlet. The AIR DRY SYSTEM can be used and renewed.

### Q. What is the principle of Silica beads(SiO)?

A. Silica bead has an average pore size of 2.4 nanometers and has a strong affinity for water molecules and after regenerate the silica beads are able to be re-used. The silica beads is most commonly encountered in everyday life as it is used as desiccant to control local humidity to avoid spoilage or degradation of certain goods. The silica beads are non-toxic and odorless plus once it is fully absorbed with humidity, they will not leak or spill water

### Q. Can the silica beads remove the odor.

A. Yes and no, the silica beads absorb moisture that cause odors and smells. The surface of silica beads carries millions of pores that can absorb particles that float in the air.

### Q. What is the life time of AIR DRY SYSTEM with regular use?

A. The AIR DRY SYSTEM is specially designed by using PTC ceramic thermal component to heat the air. The hot air goes through and dries the silica beads in order to renew the DRY UNIT. The AIR DRY SYSTEM can be used over and over again. The approximate life span of the AIR DRY SYSTEM is 3 - 5 years.

6

**Eva-Dry**  
Damp In. Dry Out!  
**AIR DRY SYSTEM**

**EVA-DRY**<sup>®</sup>  
12157 West Linebaugh Avenue, #152  
Tampa, Florida 33626  
www.eva-dry.com

7

**Eva-Dry**  
Damp In. Dry Out!



**AIR DRY SYSTEM**<sup>™</sup>

